

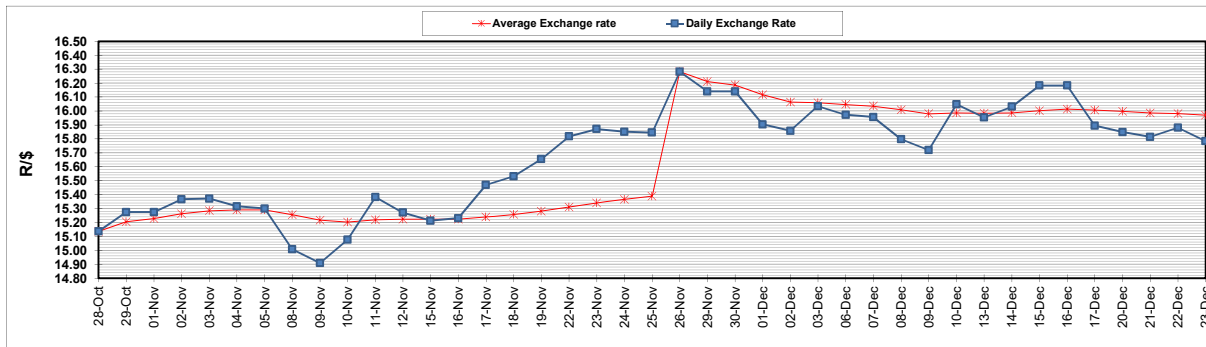
	PETROL 95 ULP	PETROL 93 ULP & LRP	DIESEL 0.05%	DIESEL 0.005%	ILL. PAR.
GAUTENG PUMP PRICE (SA c/l) AS FROM 01/12/2021	2,029.000	2,007.000	-	-	-
WHOLESALE PRICE (SA c/l) AS FROM 01/12/2021	-	-	1,792.480	1,797.880	1,167.688
SINGLE NATIONAL MAXIMUM RETAIL PRICE	-	-	-	-	1,489.000
BASIC FUEL PRICE - 23/12/2021 (SA c/l)	920.517	909.158	896.057	898.762	885.398
PRESS RELEASE CONTRIBUTION TO BFP 01/12/2021 - 23/12/2021 (SA c/l)	973.670	961.670	955.630	961.030	946.128
UNIT OVER/(UNDER) RECOVERY - 23/12/2021 (SA c/l)	53.153	52.512	59.573	62.268	60.730
AVERAGE BASIC FUEL PRICE 26/11/2021 - 23/12/2021	890.630	875.219	874.165	877.834	865.637
AVERAGE UNIT OVER/(UNDER) RECOVERY 26/11/2021 - 23/12/2021	77.557	80.967	75.765	77.196	75.391

### ANALYSIS MOVEMENT OF AVERAGE OVER/(UNDER) RECOVERY

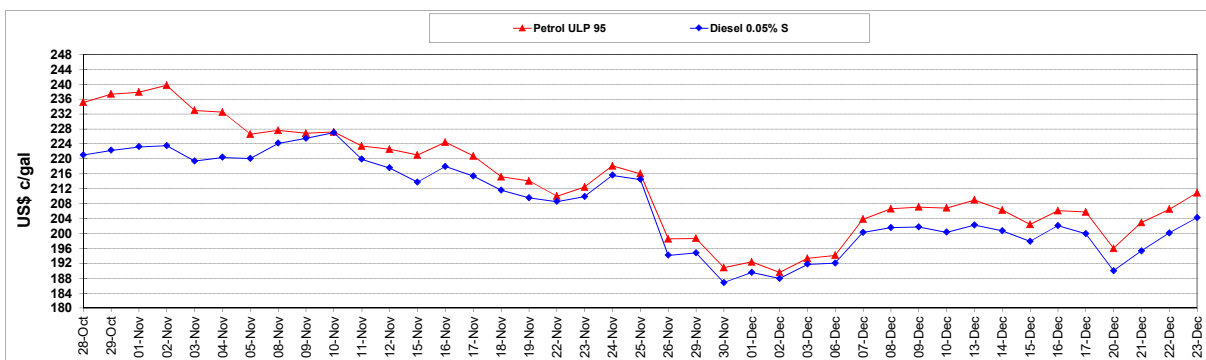
	PETROL 95	PETROL 93	DIESEL 0.05%	DIESEL 0.005%	ILL. PAR.
- MOVEMENT IN INTERNATIONAL PRODUCT PRICES	110.006	112.855	107.615	109.180	106.930
- MOVEMENT IN EXCHANGE RATE	(32.450)	(31.888)	(31.850)	(31.984)	(31.539)
AVERAGE UNIT OVER/(UNDER) RECOVERY 26/11/2021 - 23/12/2021	77.557	80.967	75.765	77.196	75.391

### R/\$ EXCHANGE RATE - (R/\$15.7835 - 23/12/2021)

#### EXCHANGE RATE USED IN BASIC FUEL PRICE



#### INTERNATIONAL PRODUCT PRICES OF BASKET USED IN BASIC FUEL PRICE



#### BASIC FUEL PRICE IN SA CENTS PER LITRE

